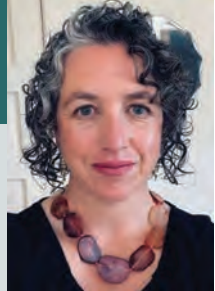




2021

# TWISPWORCS ANNUAL REPORT

## FROM THE EXECUTIVE DIRECTOR



Dear friends,

As a generous supporter of TwispWorks, you bring a transformative sense of community to the Methow Valley. I hope you are proud of the integral role you are playing in this special community.

2021 was another challenging COVID year. Our small businesses needed help. The local workforce's need for housing became unavoidable. Our artists got more time to make art but needed new ways to showcase their talent. Wildfires created urgency around understanding our ecological footprint—especially the ways it intersects with our economy and culture.

This intense period brought us all into deeper connection with our community. Your connection to community certainly shows in this report! You'll find specific stories and financial information detailing your impact in the pages that follow. I want you to know that I'm grateful for your support.

I was recently walking back to campus from the post office and had a chance conversation with a few pedestrians, two of

whom said they were headed 'over there to sit in the park.' I didn't grasp at first they were headed to TwispWorks, but as I wound my way through the native plant garden behind the Methow Valley Interpretive Center, I realized these people were coming to relax on our lawn, connect with community members, and enjoy everything campus has to offer.

Thank you for creating not just this place, but this community of friends and strangers, artists and businesspeople, students and professionals. There is so much opportunity right here at TwispWorks!

As we look ahead, we know that our community's needs will continue to change; however, our goal remains constant—to keep our business community strong and our unique valley culture vibrant. With your help, we really can turn the Methow hustle into a line dance!

Yours,

Sarah Brown  
Executive Director

## YOU MADE A HOME FOR ZOE'S LIFE CHANGING EDUCATIONAL EXPERIENCE!

Zoe Hemez is a talented student at Western Washington University. She knows she wants to build a career around climate change work, but before participating in the Sustainability Pathways Program on TwispWorks campus, she struggled to "find ways to jumpstart that career that still allowed her to pay rent."

Western Washington University leads the Sustainability Pathways Program, which is directed by Joshua Porter. Approximately twenty students spend three months in the Methow each summer. While here, they take classes with Joshua and perform a paid workplace practicum with a local nonprofit, school, or farm.

For Zoe, the practicum

was her first opportunity to do professional work in her chosen area of study. She said, "Having that vote of confidence that we do want you here and we can use your skills and you have something to contribute to this kind of work and enough so that we'll also pay you for this work was a big boost in confidence for me."

Your support gave Zoe's life changing educational experience a home. She explained, "The TwispWorks campus was very much our central meeting place and so that is where we would go for our class meetings and that's where, for our projects, we would have meetings with community members... It was just a special place because it's where a lot of our progress and our ideas came to us."



# YOU HELPED AN ARTIST BLOSSOM!



Marcia Ives lived a whole career as the owner of a caregiving company in Seattle. Thanks to your support, she's now a respected potter in the Methow Valley!

When Marcia moved to the Methow she was ready to retire, but she knew her family still needed some revenue. At first, she went back to caregiving. She found joy in being the hands on caregiver—rather than the business manager. She loved her new pottery hobby, but said, "You can only give so much pottery away to your friends." Marcia needed "something to do" with all the beautiful things she was making.



With support and encouragement from Methow Made and Methow Valley Goods—two TwispWorks programs that support local artists and makers with marketing expertise and retail space—Marcia soon found herself in business as a potter.

She said, "I'm a new artist. I didn't do anything artistic in my life before. I was shy about it and didn't know how to price things or this or that. [Methow Made] was very supportive because we don't know what to do as artists. We know how to make it. We don't know how to sell it."

**"METHOW MADE WAS A DRIVING FORCE FOR ME... NOW I ACTUALLY CALL MYSELF AN ARTIST."**

Methow Made was a driving force for me ... now I actually call myself an artist."

Thanks to support from people like you, Marcia is known for her daily use pottery: bowls, mugs, plates and more, often decorated with the Methow's iconic aspen trees. Her goods are available at Methow Valley Goods, The Mazama Store, Confluence Gallery, and Aspen Grove. She says it's "just the cat's meow" to have people buy the items she's lovingly made and use them every day to eat their cereal or drink their coffee.

## NEW CAMPUS PARTNERS

You made a home on the TwispWorks campus for Western Washington University's Sustainability Pathways office in 2021!

Under the direction of Joshua Porter, this program provides place-based, community-engaged higher

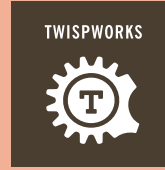
education opportunities that directly involve students in advancing cross-sector sustainability work.



## YOUR GENEROSITY MAKES AN IMPACT – AND WE'VE GOT PROOF!

Thank you for being so committed to increasing the economic and cultural vitality of the Methow Valley. You truly make an impact! For example, in 2021, your generosity...

Made a home for 32 businesses and community organizations including KTRT, Methow Valley News, and Little Star School



Provided retail space to 90+ makers from the Methow and Okanogan County at Methow Valley Goods



Created and launched a "Good Tourist" brochure

Explored 26 solutions to the local housing crisis with the Housing Solutions Network



Facilitated the investment of \$970,000+ in local businesses through the Methow Investment Network

Contributed to the creation of Resilient Methow's Methow Valley Climate Action Plan

Distributed \$64,250 in emergency grants to 29 businesses



Started a sub-chapter of the Methow Investment Network that facilitates investments in affordable housing



Welcomed thousands of community members and visitors to events on the Pavilion



## FINANCIAL REPORT

**2021 INCOME**  
\$1,102,618

GRANTS\* 39%

RENT 28%

DONATIONS 18%

OTHER INCOME 14%

**2021 EXPENSES**  
\$810,455

PROGRAMS 43%

FACILITIES 40%

ADMIN & FUNDRAISING 17%



\*2021 grants income includes a \$300,000 grant toward a Maintenance Advisory Fund held at the Community Foundation of North Central Washington.

# YOU HELPED LOCAL BUSINESSES SURVIVE THE PANDEMIC & WILDFIRES

2021 was a tough year for small businesses here in the Methow. The first half of the year was shrouded with COVID variants and the necessary precautions to keep people safe. Just when it looked like summer might provide some relief, the fires started, forcing locals to evacuate and visitors to steer clear.

Your generosity provided emergency grants to 29 businesses. These grants helped with everything from bills and payroll to marketing and developing online sales. Your support made a huge impact for these businesses. Here's what several of them had to say about the experience:



*"Like newspapers around the country, we have seen a substantial advertising revenue decline as local businesses were shut down or limited by COVID restrictions. Community support is vital to our survival as a connection point for the valley, and the Small Business Emergency Grant will make a meaningful difference. We are grateful and appreciative."*

**– Methow Valley News**



*"When the Methow Valley filled with smoke in July, the Summer schedule for Skalitude Retreat that was booked up with weddings and family vacations cleared, leaving us struggling to keep operating costs covered after such a huge loss of income. Our grant will help us catch up on bills as we recover and move forward. We're so grateful to be a part of this resilient community that looks out for one another."*

**– Skalitude Retreat**



*"The Ciderhouse income dropped off about 80% as soon as the Cedar Creek Fire and the Cub Creek Fire started. [Our Emergency Grant] will go toward salaries to our dedicated staff for getting through that horrible time of Forest Fires, Sickening Smoke, and Highway Closure."*

**–Methow Valley Ciderhouse**



## 2021 BOARD OF DIRECTORS

Perri Howard, President  
Rachel Hong, Vice President  
Denny Weston, Treasurer  
Jim Salter, Secretary  
Susan Donahue, Executive Member-at-Large

Char Alkire  
Joanna Bastian  
Phil Davis  
Anne Eckmann  
Jane Gilbertsen  
Sarah Gilman

Steve Kern  
Baylie Peplow  
Tom Robinson  
Stu Spencer  
Ken Young